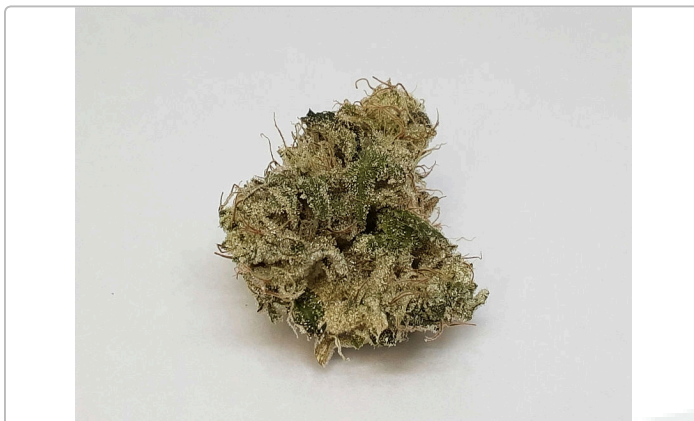


Banana DOG z

Sample ID: BIA251218S0498
Strain: HL-16
Harvest Lot:
Matrix: Plant
Type: Flower - Cured
Sample Size: 4.7 g
Lot#:

Produced:
Collected:
Received: 12/19/2025
Completed: 12/30/2025
Batch#:

Client:
FLORIST VT LLC
Lic. #
3365 VT RTE 17
Starksboro, VT 05487



Summary

Test	Date Tested	Result
Sample		Complete
Cannabinoids	12/23/2025	Complete
Moisture	12/19/2025	7.40% - Complete
Water Activity	12/19/2025	0.292 aw - Complete
Microbials	12/24/2025	Complete

Cannabinoids

Completed

30.04% Total THC					0.08% Total CBD					36.17% Total Cannabinoids				
Analyte	LOQ	Results	Results	Mass	Analyte	LOQ	Results	Results	Mass	Analyte	LOQ	Results	Results	Mass
	mg/g	%	mg/g	mg/serving		mg/g	%	mg/g	mg/serving		mg/g	%	mg/g	mg/serving
CBDVa	0.0003	<LOQ	<LOQ		CBCVa	0.0003	<LOQ	<LOQ						
CBDV	0.0003	<LOQ	<LOQ		CBNa	0.0003	0.11	1.1						
CBDa	0.0005	0.09	0.9		Δ9-THC	0.0005	0.16	1.6						
CBGa	0.0005	0.99	9.9		Δ8-THC	0.0003	0.05	0.5						
CBG	0.0005	0.26	2.6		Δ10-THC*	0.0002	0.06	0.6						
CBD	0.0005	<LOQ	<LOQ		CBL	0.0005	<LOQ	<LOQ						
THCV	0.0003	<LOQ	<LOQ		CBC	0.0003	0.21	2.1						
CBLV	0.0003	<LOQ	<LOQ		THCa	0.0005	34.08	340.8						
CBCV	0.0003	<LOQ	<LOQ		CBCa	0.0006	<LOQ	<LOQ						
THCVa	0.0003	0.16	1.6		CBLa	0.0005	<LOQ	<LOQ						
CBN	0.0005	<LOQ	<LOQ		Total THC		30.04	300.43						
					Total CBD		0.08	0.79						
					Total		36.17	361.69	0.00					

Analyst: 048

Cannabinoids Methodology: High Performance Liquid Chromatography (HPLC) using PerkinElmer FLEXAR™ with Photo Diode Array Detector (PDA)

Total CBD and total THC are calculated values, to account for assumed decarboxylation from the acid form (THCA or CBDA) to the neutral form, causing weight loss of the acid group. These values are calculated as follows:

$$\text{Total THC} = (\text{THCA} \times 0.877) + \Delta 9\text{-THC}$$

$$\text{Total CBD} = (\text{CBDA} \times 0.877) + \text{CBD Reagent}$$

Blanks: < LOQs for all analytes

LOQ = The lowest quantity that this method can reliably detect. Any cannabinoid that was not detected is assumed to be less than the stated LOQ (<LOQ).

All results reflect dry weight of material, based on % moisture of the sample.

Measurement of Uncertainty (MU): the parameter, associated with the result of a measurement, that characterizes the dispersion of the values that could reasonably be attributed to the particular quantity subject to measurement. Δ9-THC MU = ±0.005% Total THC MU = ±0.007%

All other cannabinoid MU values are available upon request.

All moisture and water activity analysis is determined by dewpoint measurement using an AQUALAB water activity meter.

*The result is the sum of delta-10 isomers.




Luke Emerson-Mason
 Laboratory Director
 12/30/2025

Confident LIMS
 All Rights Reserved
coa.support@confidentlims.com
 (866) 506-5866
www.confidentlims.com



Banana DOG z

Sample ID: BIA251218S0498
Strain: HL-16
Harvest Lot:
Matrix: Plant
Type: Flower - Cured
Sample Size: 4.7 g
Lot#:

Produced:
Collected:
Received: 12/19/2025
Completed: 12/30/2025
Batch#:

Client:
FLORIST VT LLC
Lic. #
3365 VT RTE 17
Starksboro, VT 05487

Pathogens

Completed

Pathogens	LOD	Results
	CFU/g	CFU/g
Aspergillus	5	Not Detected
Shiga Toxin E. Coli	5	Not Detected
Salmonella SPP	5	Not Detected

Analyst: 018

Test Methodology: Bio-Rad IQ-Check PCR Kits

cfu/g = colony forming units per gram

LOD = The lowest quantity that this method can reliably detect. Any microbial growth that was not detected is assumed to be less than the stated LOD (<LOD).

Reagent Blanks: <LOD for all analytes




Luke Emerson-Mason
 Laboratory Director
 12/30/2025

Confident LIMS
 All Rights Reserved
coa.support@confidentlims.com
 (866) 506-5866
www.confidentlims.com

